

Fitting guide

All-in-one-slip

HARTMANN



MoliCare® Premium Elastic

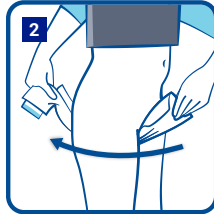
MoliCare® Premium Elastic Fitting Guide (standing position)



1 Measure both hips and waist and use the larger of the two.

Remove pads from packaging at least 1/2 hour before usage.

Fold the pad lengthways.



2 Stand beside the person. Slide the product between the legs from the front to the back.

Ensure that the product is centred in the correct position by aligning the wetness indicator with the spine.



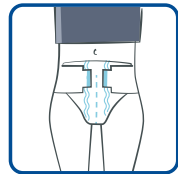
3 Fold out the 1st side panel and wrap around the person's hip.



Secure the adhesive tape into position.



4 Repeat on other side by folding out the 2nd side panel and wrap around the person's hip.



Secure the adhesive tape into position.

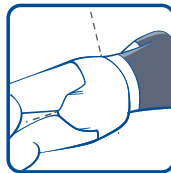
MoliCare® Premium Elastic Fitting Guide (lying position)



1 Measure both hips and waist and use the larger of the two.

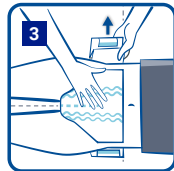
Remove pads from packaging at least 1/2 hour before usage.

Fold the pad lengthways.



2 Turn the person on their side and slide the product between the legs from the front to the back.

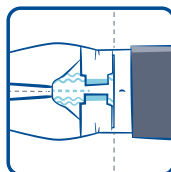
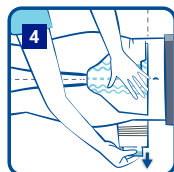
Ensure that the product is centred in the correct position by aligning the wetness indicator with the spine.



3 Turn the person onto their back.

4 Fold out the 1st side panel and wrap around the person's hip.

Secure the adhesive tape into position.



Repeat on other side by folding out the 2nd side panel and wrap around the person's hip.

Secure the adhesive tape into position.

MoliCare® Premium Elastic

For moderate to very severe incontinence



Absorbency	Code	Size	Waist/Hip Measurement		Working Capacity (ml)	Pack Size	Case Quantity
			(inches)	(cm)			
5	165 181	Small	28-35	70-90	850	30	3
	165 182	Medium	33-47	85-120	1050	30	3
	165 183	Large	45-57	115-145	1350	30	3
6	165 281	Small	28-35	70-90	1000	30	3
	165 282	Medium	33-47	85-120	1300	30	3
	165 283	Large	45-57	115-145	1400	30	3
	165 284	XL	55-69	140-175	1650	14	4
7	165 381	Small	28-35	70-90	1200	30	3
	165 382	Medium	33-47	85-120	1450	30	3
	165 383	Large	45-57	115-145	1650	30	3
8	165 481	Small	24-35	60-90	1400	26	3
	165 482	Medium	31-47	80-120	1900	26	3
	165 483	Large	39-59	100-150	1950	24	3
	165 484	XL	51-67	130-170	2150	14	4
9	165 581	Small	28-35	70-90	1550	26	3
	165 582	Medium	33-47	85-120	2100	26	3
	165 583	Large	45-57	115-145	2300	24	3
	165 584	XL	55-69	140-175	2350	14	4
10	165 671	Small	28-35	70-90	1650	22	3
	165 672	Medium	33-47	85-120	2150	14	4
	165 683	Large	45-57	115-145	2450	14	4
	165 684	XL	55-59	140-175	2650	14	4

To order additional products, go to www.hartmanndirect.co.uk or call **0800 028 9490**