

# MoliCare® Form & Fixpants

Incontinence

HARTMANN



MoliCare®

## Premium Form

Anatomically shaped pad with skin friendly pH 5.5 providing optimal leakage protection and wearing comfort.



**MEN** Specially designed for the male anatomy with a broader V-shaped front.

**NEW**

**STOOL** Specifically designed for people who suffer from faecal incontinence, people with catheter, or diarrhea.

**NEW**

**+SIZE** Specifically designed to provide extra coverage for bariatric patients and residents who suffer from incontinence.

MoliCare®

## Fixpants

Fixation pants for a secure hold. Available in a long leg and in a short leg version.



MoliCare®

## Premium Fixpants

Comfortable as regular underwear, while providing safe and hygienic fixation of MoliCare® Premium Form.

**5XL** Specifically designed to provide extra coverage for bariatric patients and residents people who suffer from incontinence.

## 1 Can I request a sample and try products before I buy?

Samples of MoliCare® Premium Form, MoliCare® Premium Fixpants and MoliCare® Fixpants products can be ordered on 0800 028 9490.

## 2 What does the drop system stand for?

The MoliCare® 10 droplet system indicates the different absorbency levels for each product in the range, making it easy to select the right product for every level of incontinence. The higher the drop value, the higher the product's absorbency capacity. This is HARTMANN's own system as there is no international standard for droplet systems. Please refer to Q. 19 for more information regarding the product categories, sizes and absorbency levels. The droplet system does not apply for MoliCare® Premium Form STOOL, see explanation for Q. 14.



Less absorbent



More absorbent

## 3 What does pH 5.5 mean? What are the benefits for the skin?

A skin-neutral pH level of 5.5 offers maximum skin compatibility and reduces the risk of Incontinence Associated Dermatitis (IAD).<sup>1</sup> MoliCare® Premium Form products provide active skin protection

thanks to their pH level of 5.5. Also, the compatible skincare products maintain the acid protection mantle of the skin through a skin-neutral pH level of 5.5.

## 4 Are MoliCare® products suitable for sensitive skin?

Yes, MoliCare® products have been dermatologically tested and are suitable for almost all users.

## 5 What does SAP mean and what does it do?

The Superabsorbent Polymer (SAP) material is a significant part of many MoliCare® absorbent products. It retains the wetness securely in the gel by locking in the urine and neutralising ammonia (odour).

## 6 How does the absorption system work in MoliCare® Premium Form absorbent products?

MoliCare® products keep skin dry with their triple absorption layer with quick dry system.<sup>2</sup>

This directs the liquid to the inner part of the absorbent pad. The absorbent core also contains SAP that provides more wearing comfort by locking in liquids. In addition to the quick dry system, MoliCare® Premium Form products are equipped with water repellent cuffs for extra security.

<sup>1</sup> Bliss et al., Absorbent Briefs Containing Curly Fibre Lower (Acidify) Skin pH Reducing Risk of Incontinence Associated Skin Damage in Older Nursing Home Residents; 2016

<sup>2</sup> Except for MoliCare® Premium Form STOOL and MoliCare® Premium Pad 0.5 drop and 1 drop.

# MoliCare® Form & Fixpants

Incontinence

HARTMANN



## 7 What are the benefits of the textile-like back sheet on MoliCare® Premium Form?

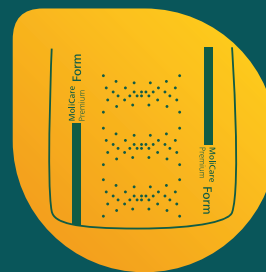
The soft textile-like back sheet on MoliCare® Premium Form products provides a comfortable feeling.

## 8 What is the wetness indicator on MoliCare® Premium Form? Can the ink transfer to the skin?

The wetness indicator signals when it is time to change the product.<sup>3</sup> MoliCare® Premium Form products should be changed when the ink has run in all squares except for approx. 2-3 squares in the back and 2-3 squares in the front. The ink is in contact with the inner surface of the back sheet and not in direct contact with the skin. The printing ink is in compliance with international safety regulations and is not harmful for the skin.



Intact indicator means the product is still dry



Blurred indicator means the product has absorbed urine

## 9 Is the wetness indicator visible through MoliCare® Fixpants?

Yes, although MoliCare® Fixpants have a dense structure with a strong material, the wetness indicator is clearly visible.

## 10 What information can be found on the back sheet of MoliCare® Premium Form?

The back sheet design provides easy identification of all relevant information such as brand name and droplets. We developed a system which enables quick and easy recognition of products likely to be side by side in the cupboard. Beside the green colour of the textile-like back sheet, the back sheet printing for MoliCare® Premium Form STOOL has the same logic as the other Premium Form products.



## 11 How do I know which is the front and the back of the product?

MoliCare® Premium Form products are equipped with a broader absorption core at the back.

MoliCare® Premium Form MEN with 6 drops have a larger front to suit the male anatomy.



**12** For what specific reason has MoliCare® Premium Form +SIZE been designed?

It has been designed specifically to serve the needs of +SIZE people. Since bariatric patients need a larger product, MoliCare® Premium Form +SIZE is longer than other MoliCare® Premium Form products, for extra protection.

In combination with the MoliCare® Premium Fixpants long leg 5XL, you can ensure a secure.

**13** For what specific reason has MoliCare® Premium Form STOOL been designed?

It was designed specifically to serve the needs of people who are usually catheterised and/or suffer from faecal incontinence. This product has a large

back for extra protection and effective anti-leakage pockets to store faeces safely.

**14** Can I use MoliCare® Premium Form STOOL for urinary incontinence? It has no droplet system on the packaging/product.

Although MoliCare® Premium Form STOOL contains fluff and SAP which absorb a certain amount of liquid, the product was specifically

designed for faecal incontinence. Therefore, we do not recommend this product for managing urinary incontinence.

**15** Are MoliCare® Premium Form +SIZE and MoliCare® Premium Form STOOL also suitable for men?

Yes, they are unisex products, meaning they can be used by both men and women.

**16** Why does MoliCare® Premium Form STOOL have a green back sheet?

The green textile-like back sheet provides easy identification amongst other MoliCare® Form products.

**17** How do I find the right product for my patient or relative?

There are no sizes in the MoliCare® Premium Form range but it is important to choose the right absorption capacity of a MoliCare® product in combination with the appropriate size of MoliCare® Fixpants. The colour coding of the size on the waistband makes it easy to select the correct option. To select the correct size, it is highly recommended to measure the hip girth with a tape measure at the level of the lower hip bones, regardless of the body shape.

# MoliCare® Form & Fixpants

Incontinence

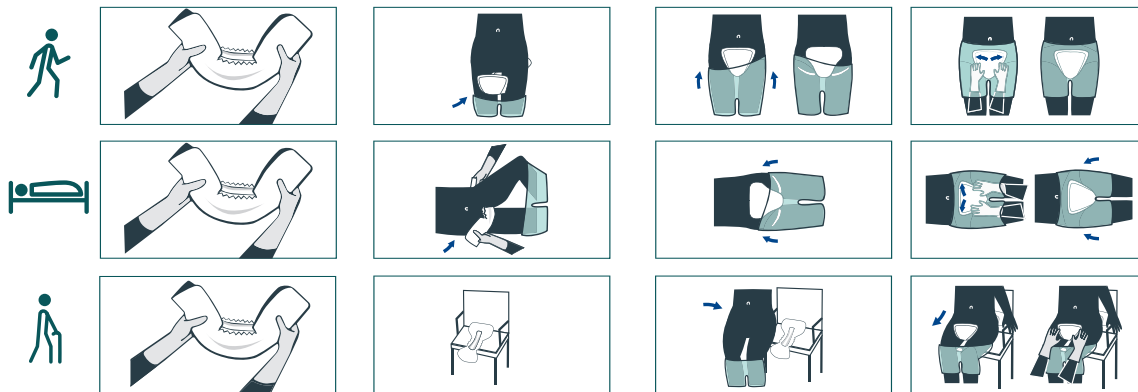
HARTMANN



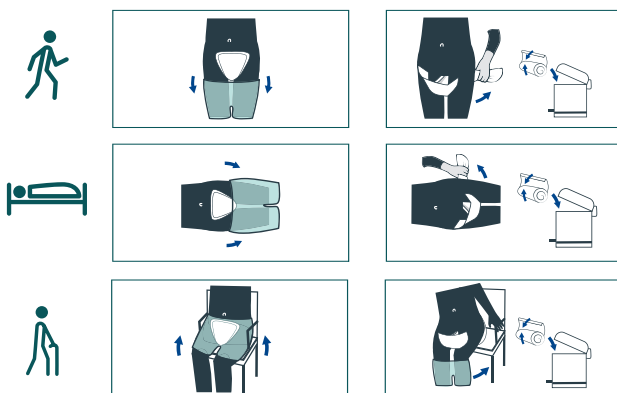
## 18 How do I use and change the products?

The following application guides show how to change the products comfortably and quickly:

How to apply MoliCare® products



How to remove and dispose of products



# MoliCare® Form & Fixpants

Incontinence

HARTMANN



## 19 How many pieces are available in a pack and packs in a carton?

The number of pieces per pack and number of packs per carton differs depending on the absorbency level:

### MoliCare® Premium Form

Product Category	Absorbency Level	Units Per Pack	Packs Per Unit
MoliCare® Premium Form	3-8 drops	28	4
MoliCare® Premium Form MEN	6 drops	28	4
MoliCare® Premium Form +SIZE	8 drops	18	3
MoliCare® Premium Form STOOL	N/A	32	4

### MoliCare® Fixpants

Product Category	Size	Units Per Pack	Packs Per Unit
MoliCare® Premium Fixpants short leg	S, M, L, XL	25, 5	12, 60
	XXL	25	12
MoliCare® Premium Fixpants long leg	S	25, 5	8, 60
	M, L, XL, XXL, XXXL	25,5	8, 40
	5XL	25, 5	5, 25
MoliCare® Fixpants short leg	M	100	4
	L, XL	100, 3	4, 100
MoliCare® Fixpants long leg	M, L, XL, XXL	50, 5	6, 60

HARTMANN UK & Ireland +44 (0) 1706 363200  
 Email: [info@uk.hartmann.info](mailto:info@uk.hartmann.info)  
[www.hartmann.co.uk](http://www.hartmann.co.uk)  
[www.hartmanndirect.co.uk](http://www.hartmanndirect.co.uk)

Never miss an update from HARTMANN UKI  
 Join [www.hartmannmarketing.com](http://www.hartmannmarketing.com) online now

Copyright Paul Hartmann Ltd.  
 ® represents a trademark of Paul Hartmann Limited,  
 a company registered in England and Wales  
 (company number 01523121) CM-00002/22-GB