

Share the care at



**Shared care is a key driver for the NHS.**

It is part of the NHS long term plan, encouraging patients to take a more active role in their health and well-being.

**HARTMANN** want to be able to provide relevant tools to support both the health care professional and patient to develop a positive, shared care partnership in practice.

**HARTMANN** have created HOME an acronym designed to help support the identification, assessment and implementation of such partnerships in shared wound management.

For further information and updates please visit [www.sharedcareathome.com](http://www.sharedcareathome.com) or scan the QR code with your smart phone camera



- [1] Data on file: 27\_Z+SilBorder\_benchmark.
- [2] Data on file: Dressing Heat and Water Vapor Report 20.07.2018.
- [3] Data on file: Usability Test with n=30 2018.
- [4] Davies LO, Rippon MG and Westgate SJ (2017). Odour Sequestration Properties of Superabsorbent Dressings Perfectus Paper 2017: Poster presented at Wounds UK. Harrogate, UK.
- [5] World Union of Wound Healing Societies (WUWHS) (2019). Consensus Document: Executive Summary. Wound exudate: effective assessment and management. Wounds International
- [6] Davies LO, Carney J, Purcell LE, Rippon MG and Westgate SJ (2017). Microbial Sequestration and Proteinase Modulation Properties of Silicone-Coated Superabsorbent Dressings Perfectus Paper 2017: Poster presented at Wounds UK. Harrogate, UK.
- [7] Data on file: 27\_Z+SilBorder\_Add\_Feat\_adhesiveness assessment.
- [8] Data on file: 27\_Z+SilBorder\_Add\_Feat\_barrier
- [9] Barrett, S. et al. (2020). Treatment of 52 patients with a self-adhesive siliconised superabsorbent dressing: a multicentre observational study. Journal of Wound Care vol. 29, no. 3, June 2020.
- [10] Hiskett G, 2020 Shared care in wound management: a significant opportunity, GPN, Vol 6, No 3

**HARTMANN UKI Healthcare Professionals** HARTMANN GROUP ©2020  
Paul Hartmann Limited. ® represents a trademark of Paul Hartmann Limited, a company registered in England and Wales (Company Number 01523121) WM-000119/20-GB



# WHAT IF

you could give your patients more time?



# DISCOVER Zetuvit® Plus Silicone Border

Zetuvit® Plus Silicone Border the new silicone SAP dressing with border for optimal moisture management <sup>[1,2]</sup> with a waterproof, bacteria and viral proof barrier.<sup>[3]</sup>

**WHAT IF** your dressing was so simple to use your patients could apply it?

## Versatile

- Suitable for moderate to high exudate levels <sup>[1]</sup> while maintaining optimal microclimate <sup>[2]</sup>
- Simple & intuitive application <sup>[3]</sup> Clear border to help see periwound skin



**WHAT IF** your dressing had all the benefits of a siliconised SAP foam and improved exudate management?

## Effective

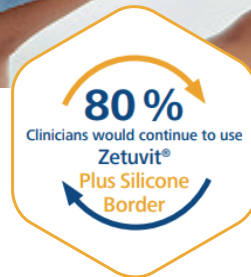
- Very good absorption and retention while maintaining optimal microclimate, even under compression <sup>[1,2]</sup>
- Reduces MMP activity <sup>[4]</sup> which may delay healing
- Avoids leakage and prevents periwound skin damage <sup>[1,5]</sup>



**WHAT IF** you could help how your patients feel about their wound?

## Patient Friendly

- Alleviates concerns of odour and leakage <sup>[1,5,6]</sup>
- Prevention of trauma and painless dressing changes thanks to silicone interface <sup>[7]</sup>
- Comfort and cushioning provided by a unique combination of cellulose and SAP



## PATIENT QUOTES

"This is **the best dressing** I've ever had"

"Extremely pleased with how the product stayed in place"

"I can get my shoes on for the first time in 12 years"

# WHAT IF

your patients could be more involved in their own care?

## Benefits of Shared Care <sup>[10]</sup>

### Patient

- Sense of purpose
- Achieving a goal
- Better understanding of their condition and requirements
- Financial benefits
- Motivation to heal

### Health Care Professional / NHS

- Effective use of resources
- Impact on the quality of treatment
- Clinical outcomes
- Cost effective care



**Giving you more time...**

For wounds assessments

NHS Targets

For new patients

How would that time look?

